

# City of Edinburgh Council – Rising School Rolls Phase 2

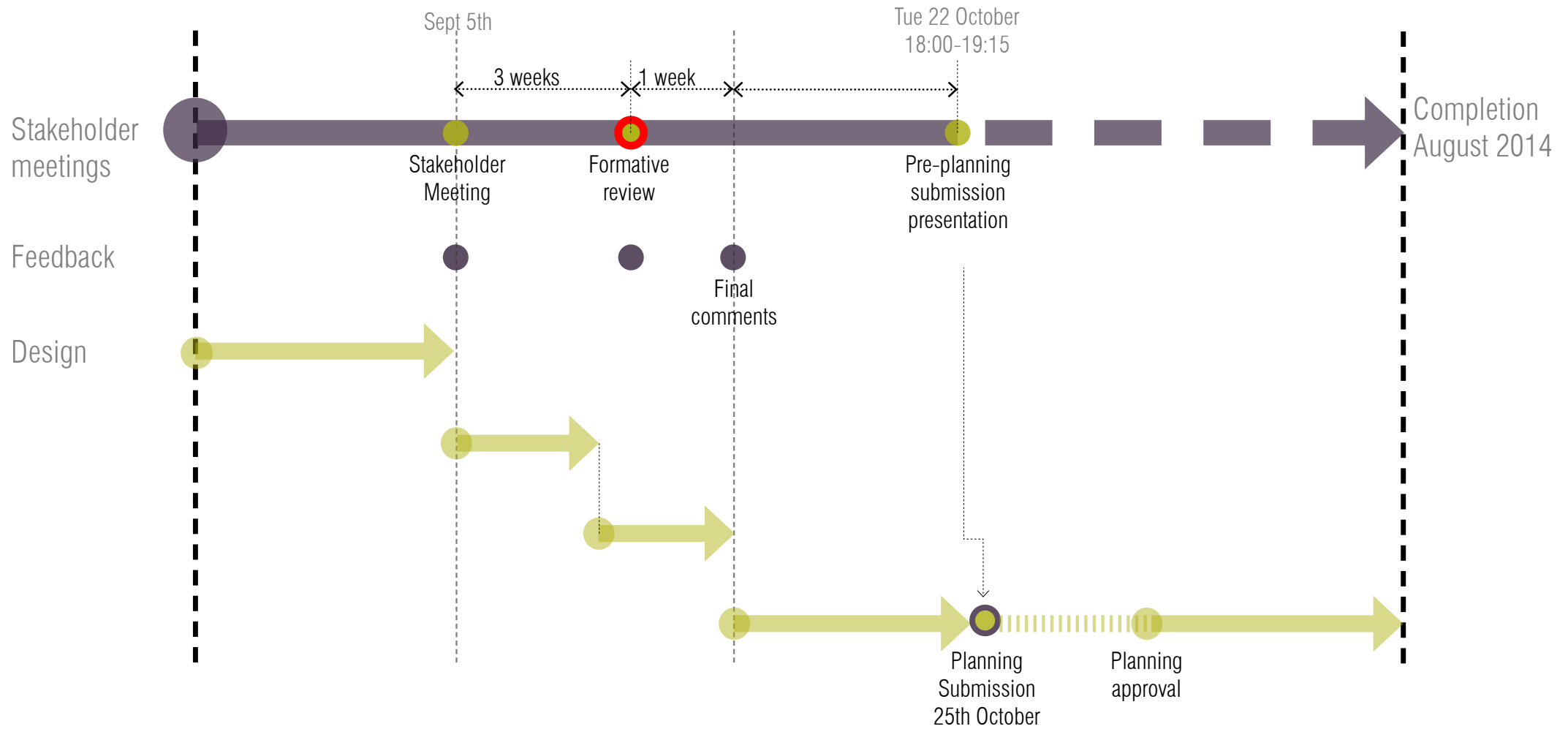
## Liberton Primary School

Stakeholder Meeting 2

27 September 2013



# Programme



# Feedback

## Stakeholder feedback matrix

- we are tracking your feedback

- we will feed into this in the coming stages

ITEM NUMBER	DATE	COMMENT	BY	RESPONSE	BY	RESOLVED
1	05/09/2013	Location of the building on southern playground is not preferred option - can we look at NE boundary instead?	Liberton Primary	SB will develop options for site locations - with NE as preferred option.	SB	✓
2		Can buildings accommodate flexibility / PE curriculum use?	Liberton Primary	SB to develop designs showing degree of in built flexibility - note that finishes would need to be discussed with regards a light PE use.	SB	
3		Opening out classrooms to landscape/ playground	SB	SB will develop this further - and this will inform site location in next presentation.	SB	
4		Secure use of playground/ outdoor classes in realtion to the buildings	Liberton Primary	SB will look to include space for the developemnt of the outdoor spaces adjacent by the school and CEC direct when examining site options.	SB	
5		Desire to build 5 classrooms now rather than over phases	Liberton Primary	SB will design for 5 classes however CECwill ultimately decide on what gets built based on School Roll requirements	SB/ CEC	

ONGOING

# Evolution - The Classroom

Our Optimum Schools concepts have been developed to maximise efficiency and users needs.

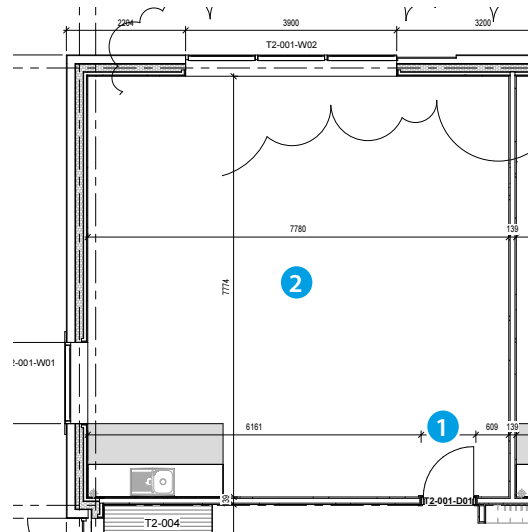
## Optimum School - Design Principles

### PROS

- Classrooms to have dual aspect for light and ventilation
- Classrooms could be flexibly linked/ adapted
- Shared hub space for practical group work makes use of dead space
- Inside/ outside learning potential

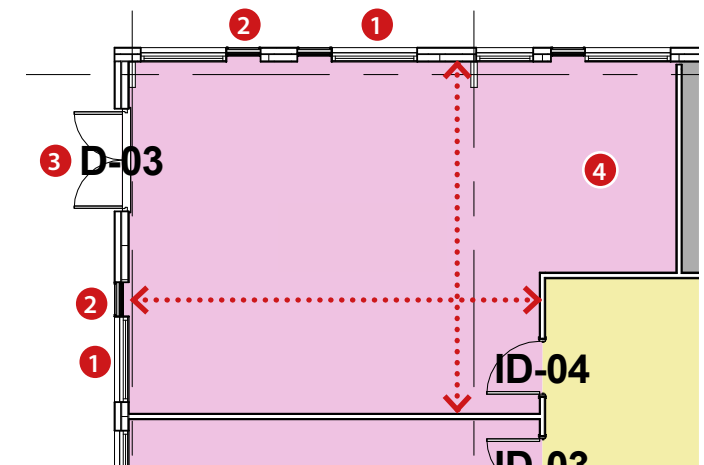
### CONS

- configuration may have larger impact on environment in terms of offsets required/ proximity to site edges etc.



Existing Rising Rolls Phase 1 Classroom

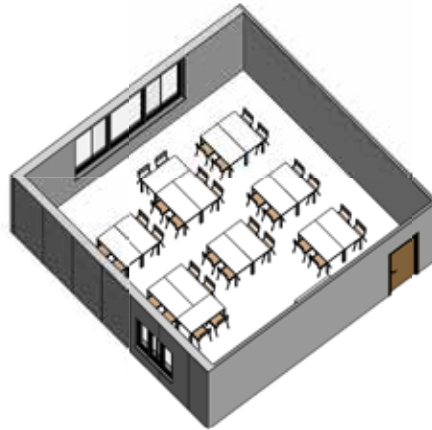
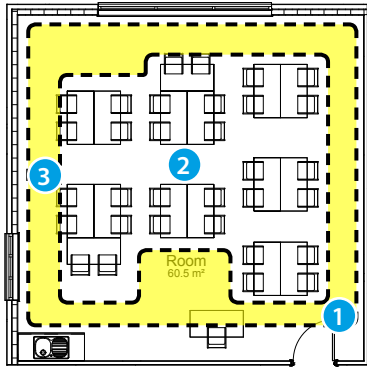
- 1 Inner corner - daylighting/ ventilation issues?
- 2 Square layout needs gets broken up when zoned for uses



Optimum Schools Classroom

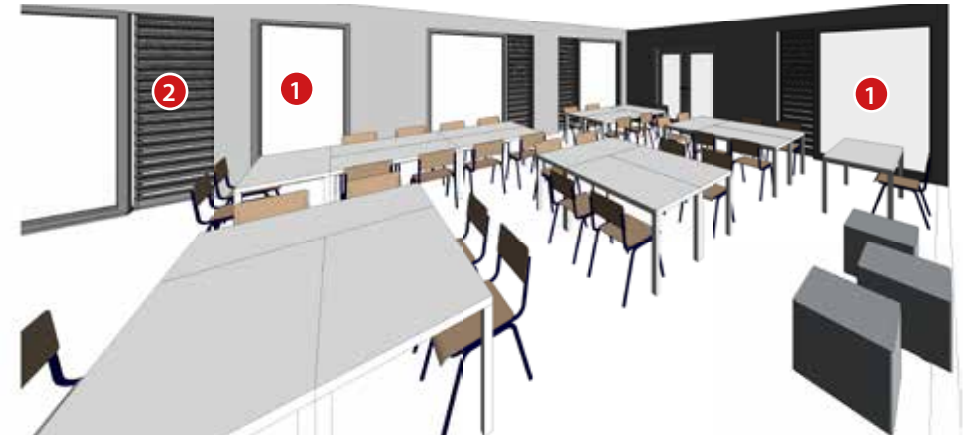
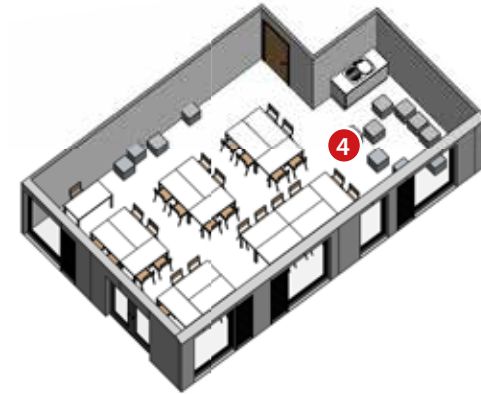
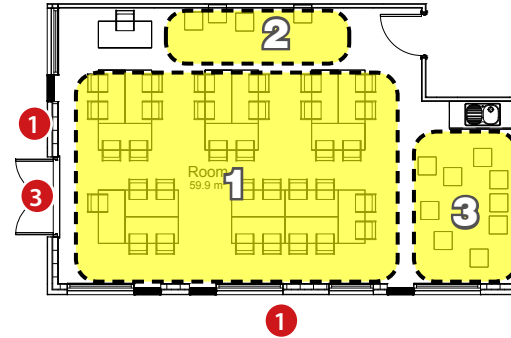
- 1 Maximise daylighting from two sides
- 2 Natural cross ventilation within facade
- 3 Access to outdoor learning
- 4 L-shaped space allows for efficient zoning of uses

# Evolution - The Classroom



Existing Rising Rolls Phase 1 Classroom

- 1 Inner corner - daylighting and ventilation issues / small windows
- 2 Square layout gets broken up when zoned for uses
- 3 Peripheral layout is inflexible

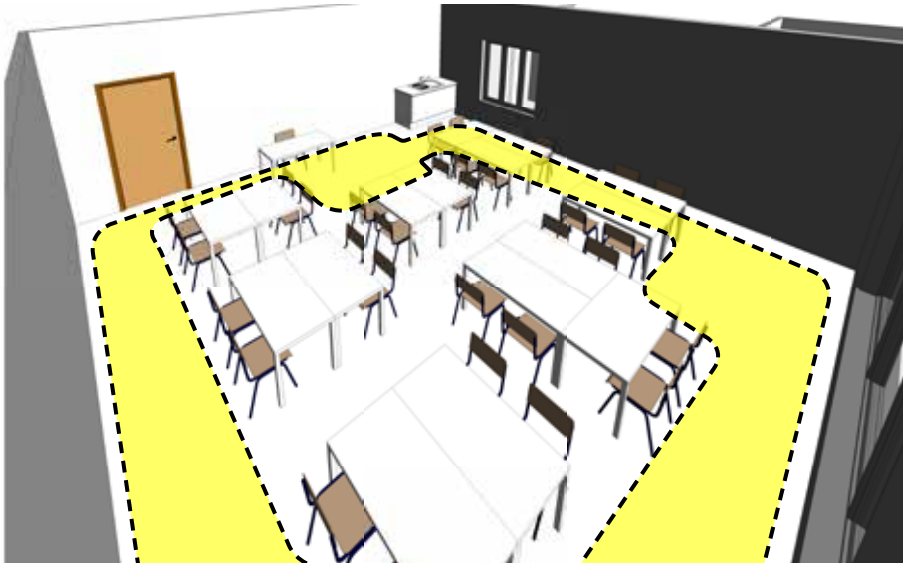


Optimum Schools Classroom

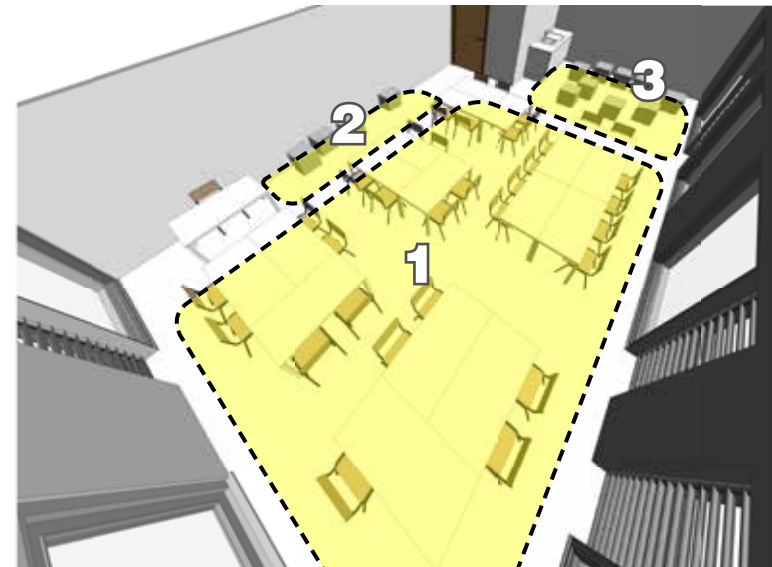
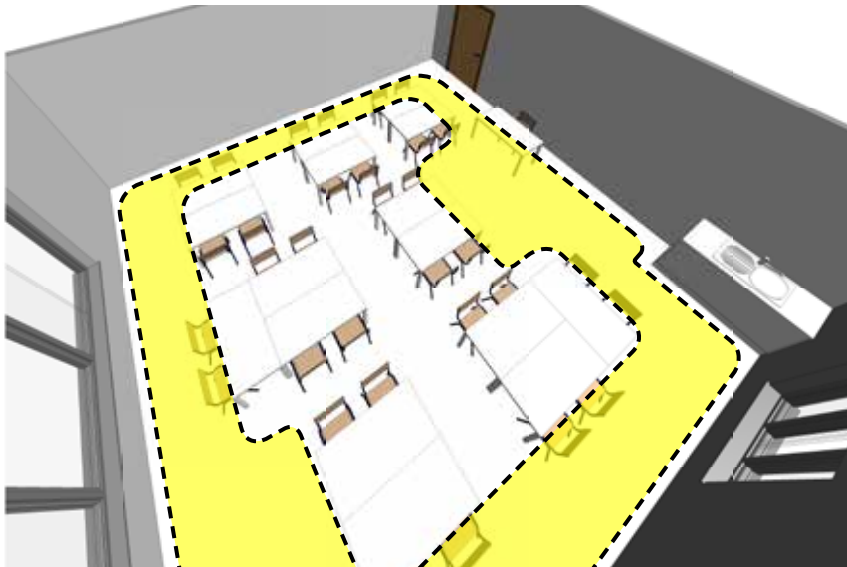
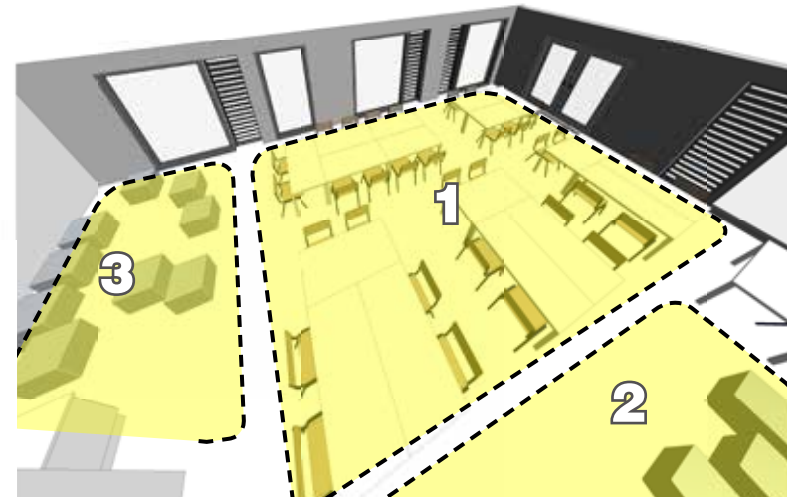
- 1 Maximise daylighting from two sides
- 2 Natural cross ventilation within facade
- 3 Access to outdoor learning
- 4 L-shaped space allows for efficient zoning of uses

# Evolution - The Classroom

Existing Rising Rolls Phase 1 Classroom

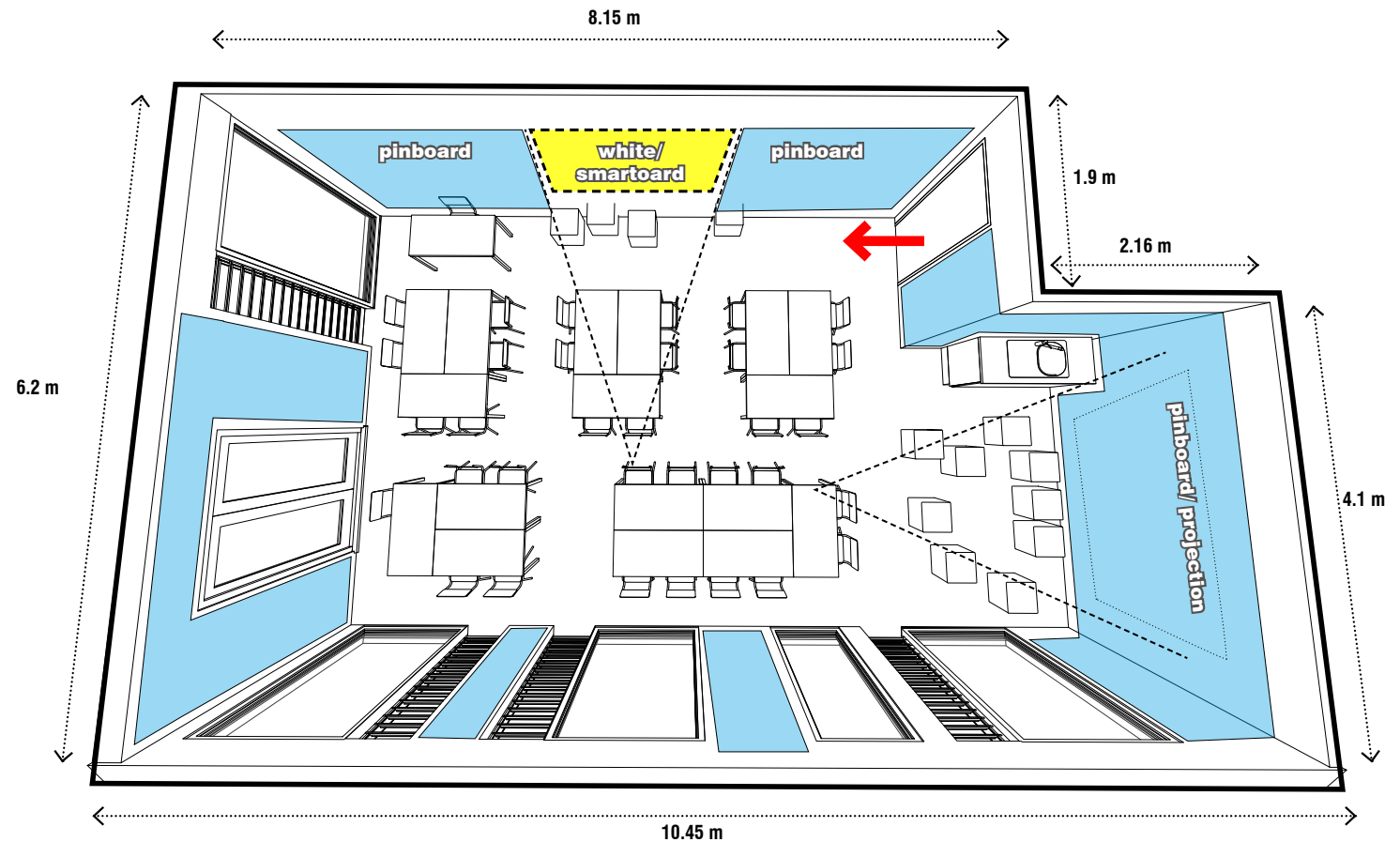


Optimum Classroom



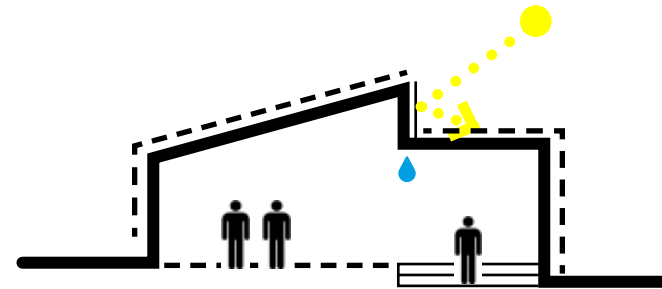
# Evolution - whiteboard/ pinboard/ space

- 60m<sup>2</sup> Class space
- 33 student seats
- Maximise display wall
- Full height pinboards
- Optimise amount of windows for daylight  
*(this will develop as technical design progresses)*
- Optimise ventilation louvres  
*(this will develop as technical design progresses)*

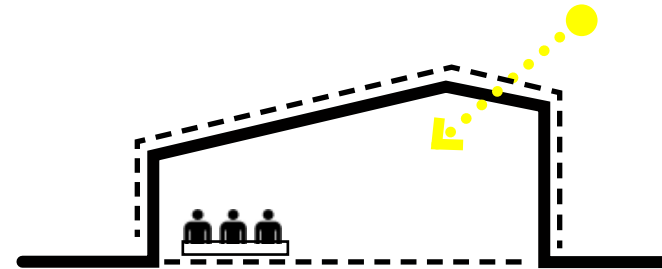


# Evolution - Form

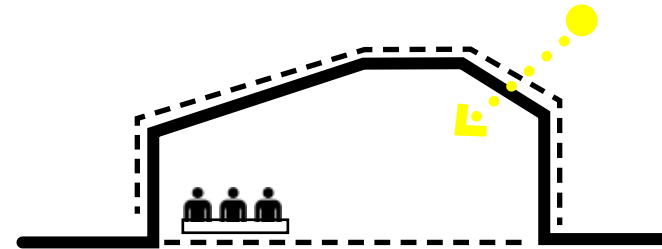
- Phase 1 combined forms/ different levels



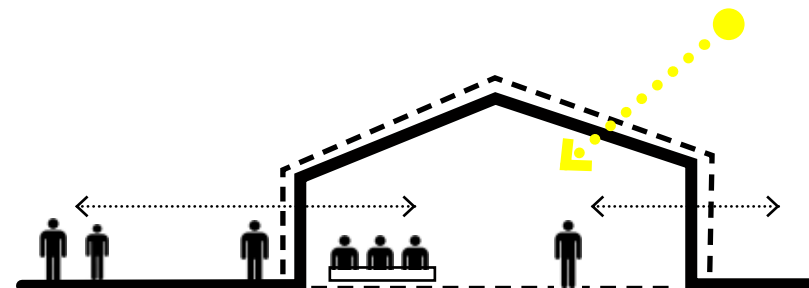
- Allow light in / shape becomes more singular object



- Object develops and simplifies further



- Simplified/ modern/ vernacular/ traditional





# Precedents

---

What is contemporary?



What is vernacular?



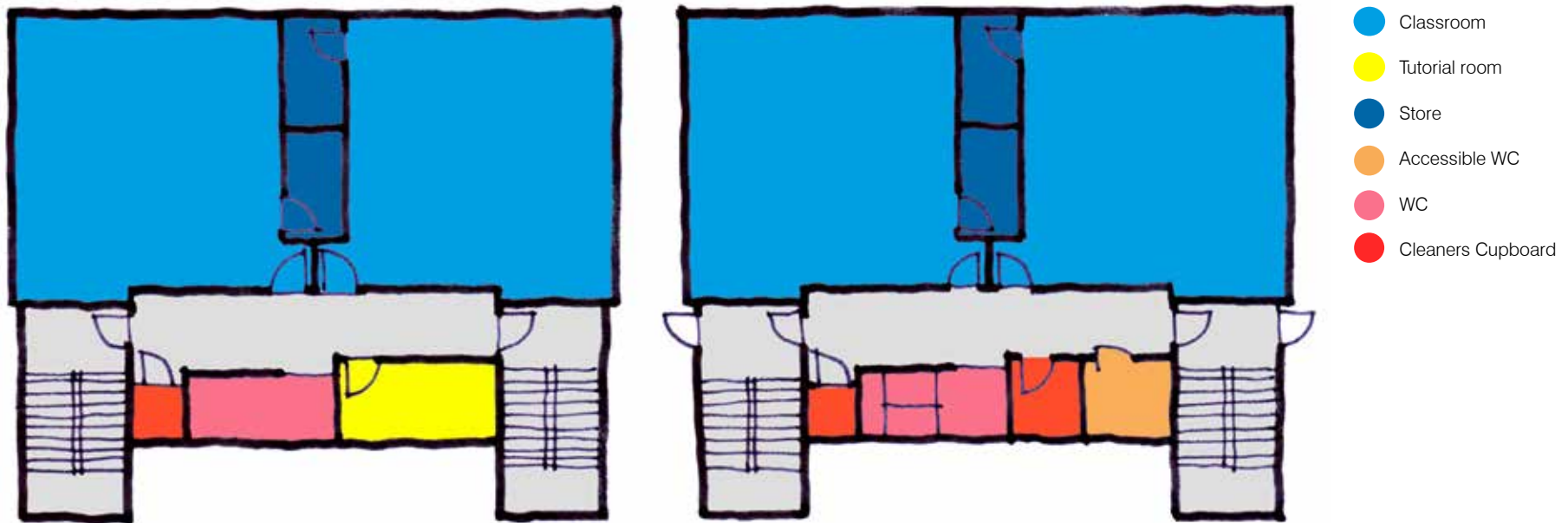
# Evolution - Existing plan

TRINITY PRIMARY SCHOOL

Single phase

4 Class

Double storey



Approx. Total Gross Internal Floor Area = 424m<sup>2</sup>

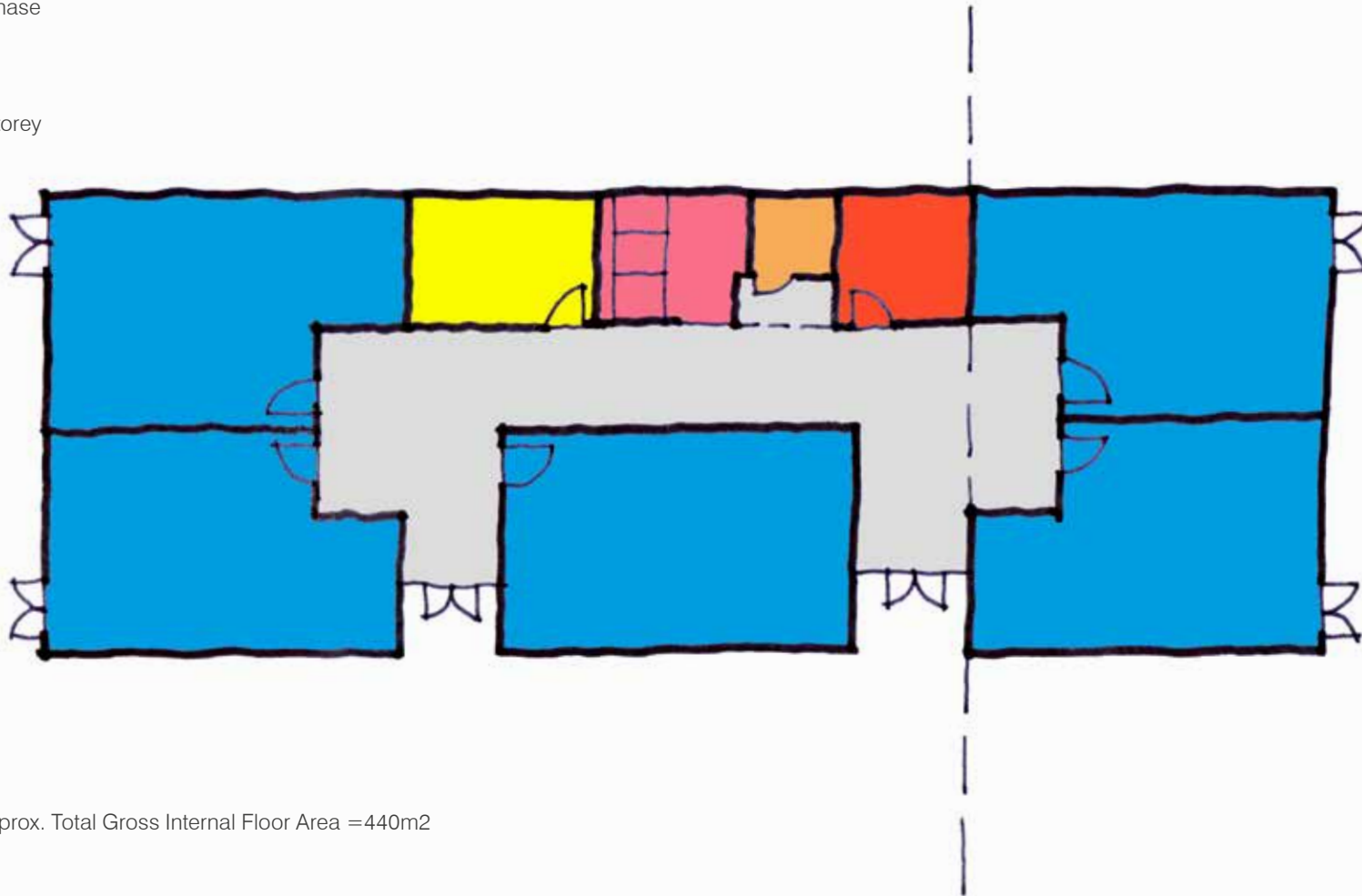
# Evolution - developing a new plan

LIBERTON PRIMARY SCHOOL

Single Phase

5 Class

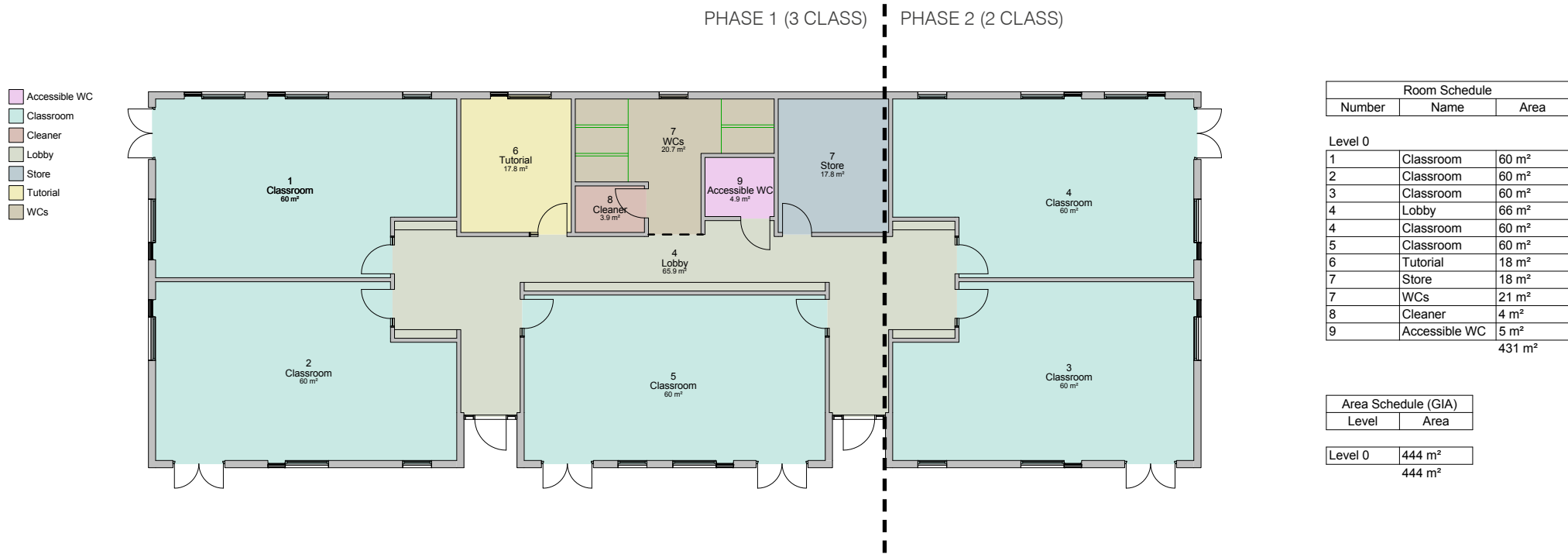
Single Storey



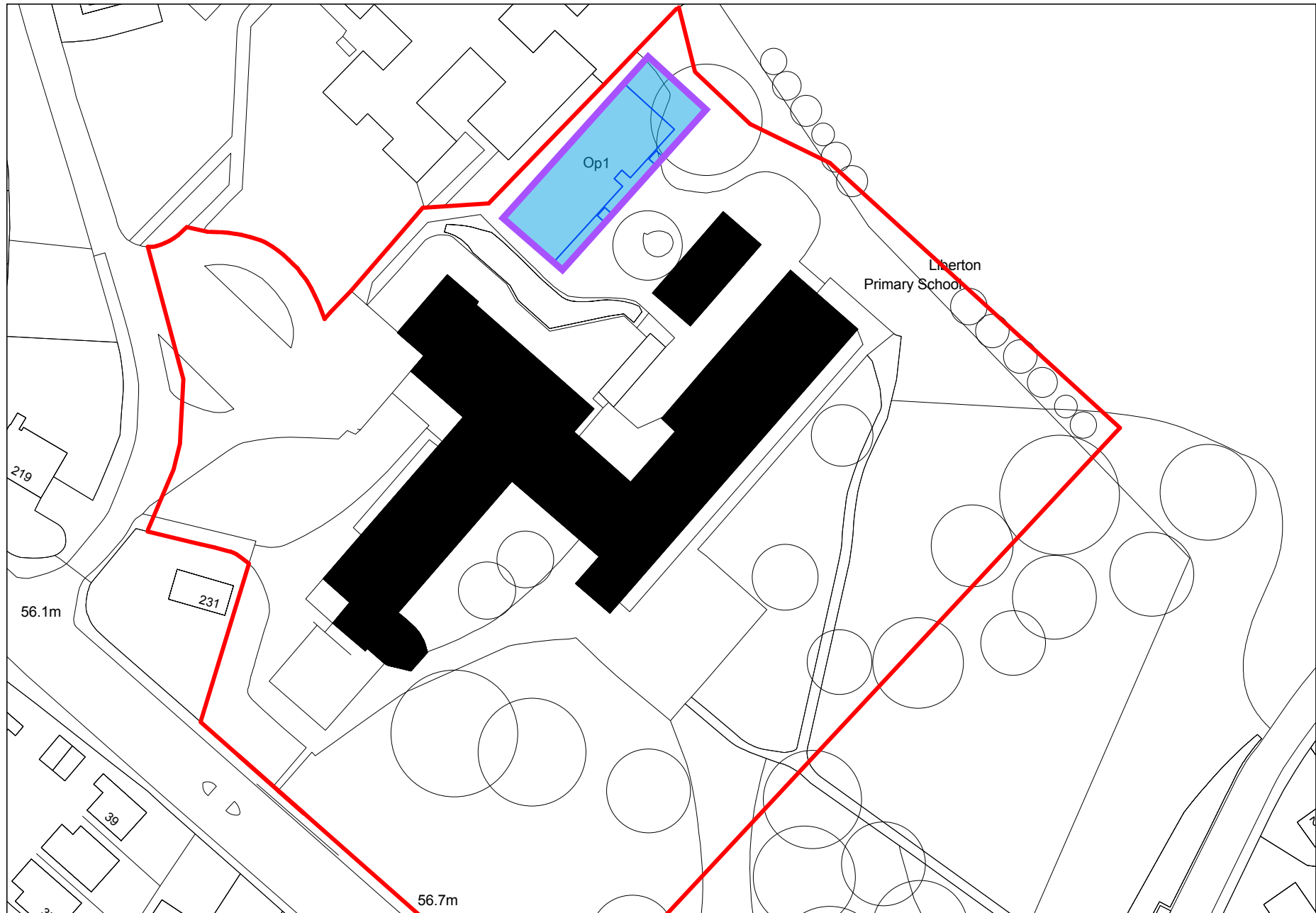
- Classroom
- Tutorial room
- Store
- Accessible WC
- WC
- Cleaners Cupboard

Approx. Total Gross Internal Floor Area = 440m<sup>2</sup>

# Evolution - A new plan



# Evolution - Site Plan



# Evolution - Massing

LIBERTON PRIMARY SCHOOL

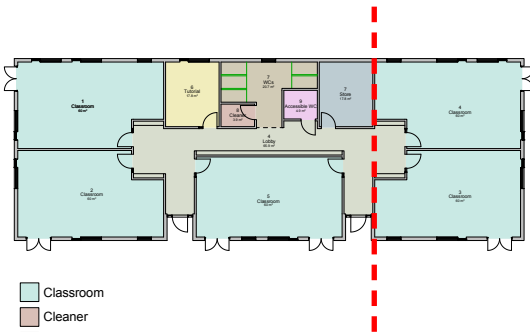
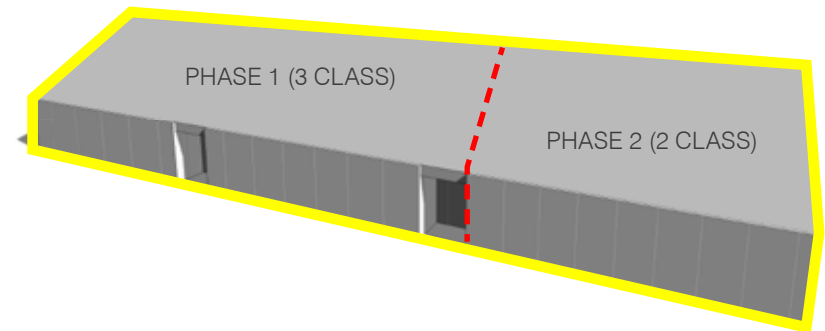
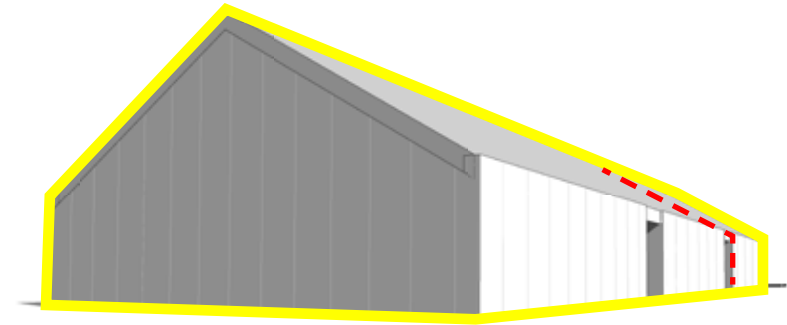
Single Phase

OR

Two Phase 3 + 2

5 Class

Single Storey



- Classroom
- Cleaner
- Lobby
- Store
- Tutorial
- WCs





# Evolution - 'added value' features

## Access to external spaces

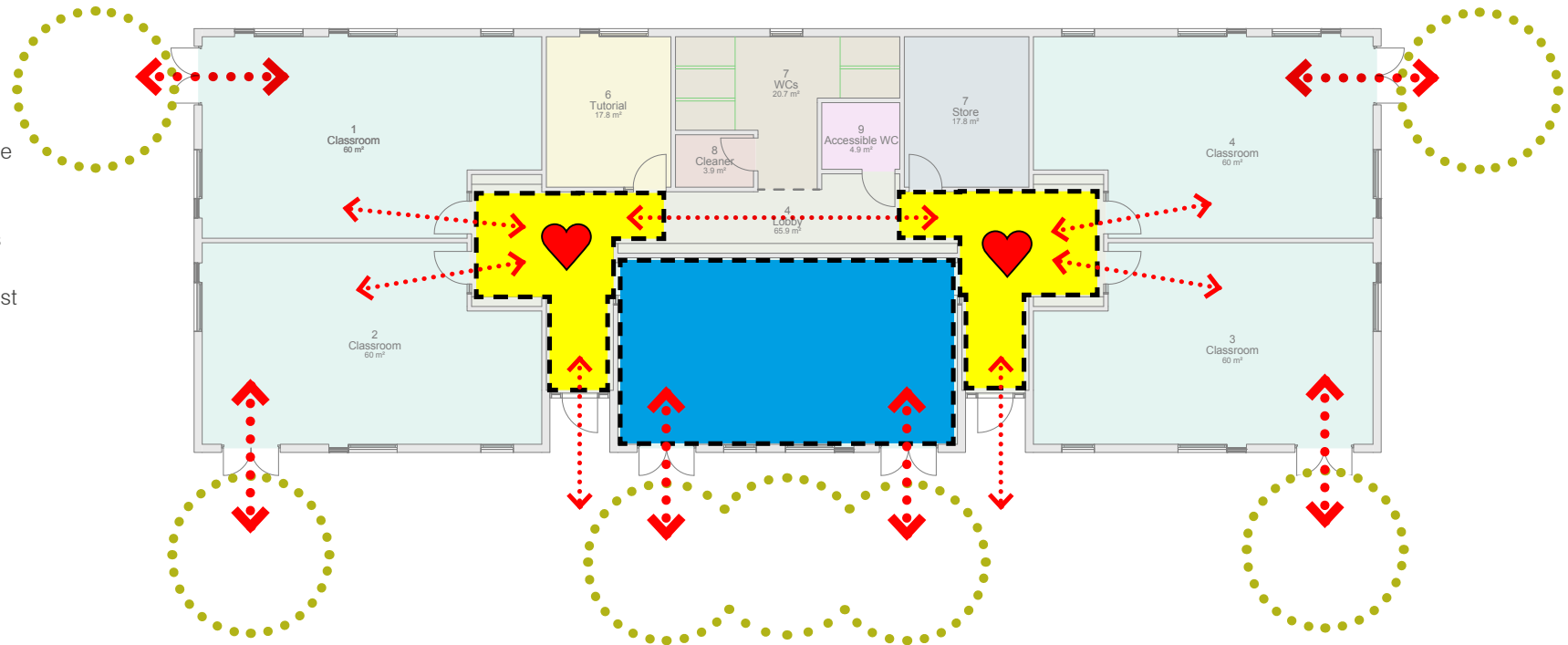
- Enhanced teaching provision related to developing curricula standards
- Ease of access for immediate external teaching

## Centralised circulation

- All learning spaces open off central, flexible shared space
- Central space is more than circulation and gives what is a small standalone building 'heart' spaces rather than just a sequence of corridors

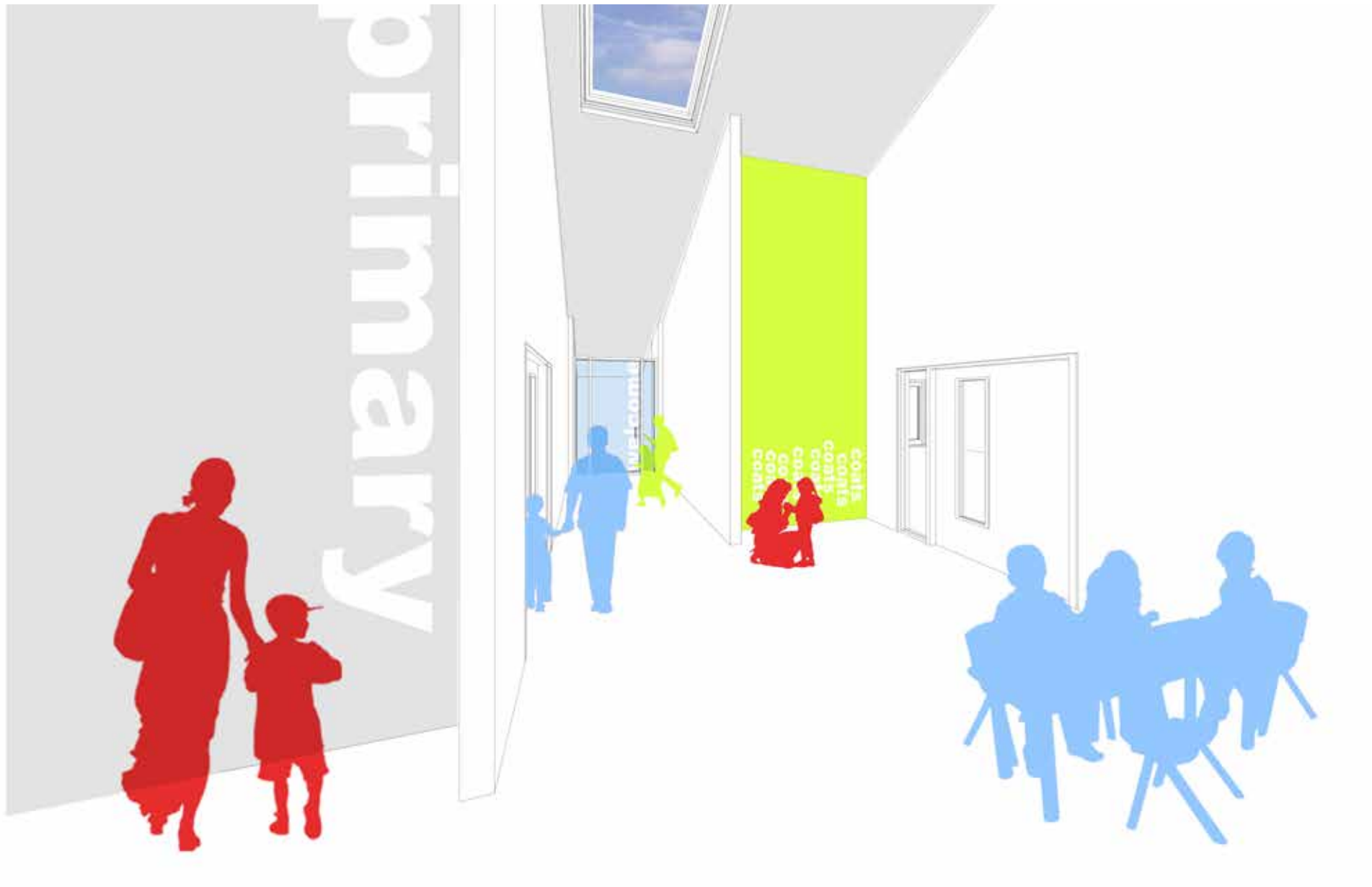
## Central 5th Classroom

- Centrally located for access by other classes and wider school
- Zone can be utilised for various purposes as requirements change





## Evolution - 'added value' features

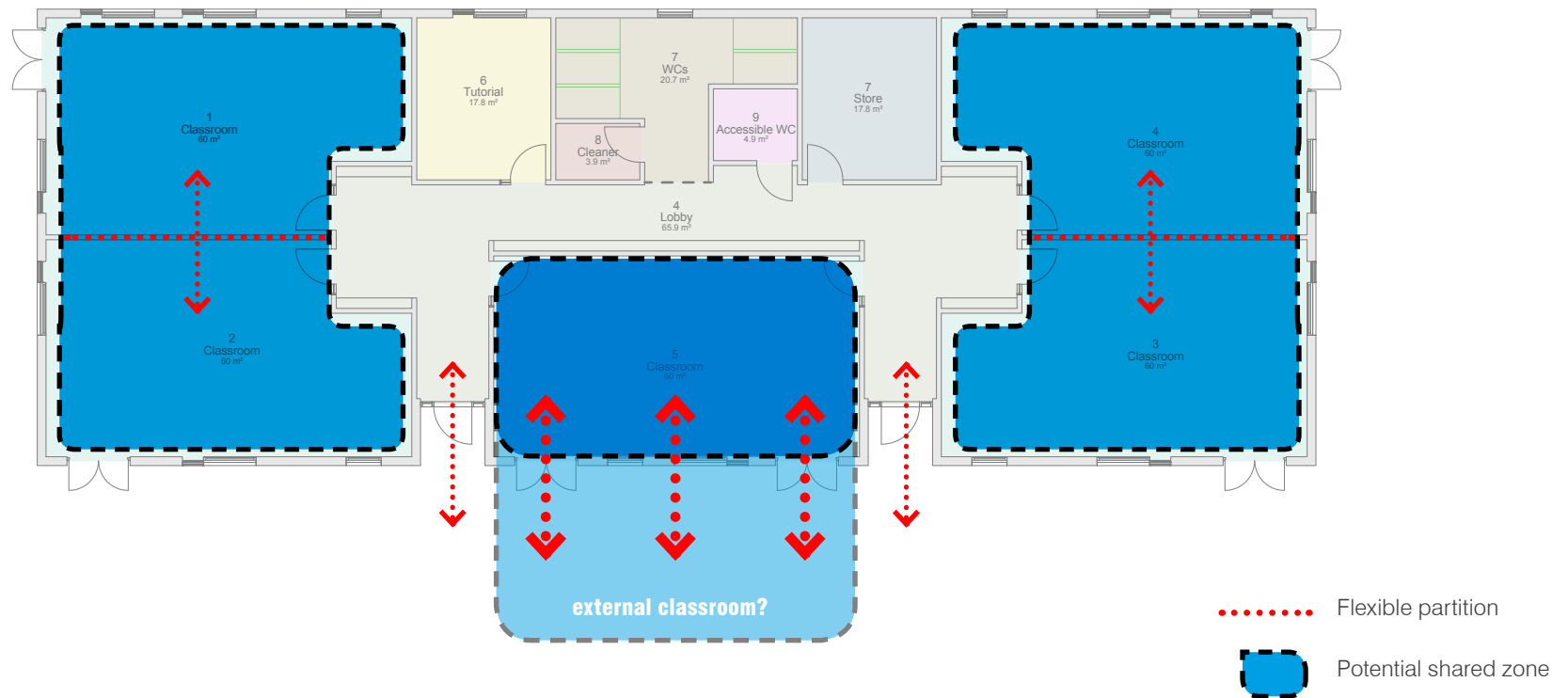


## Evolution - 'added value' features

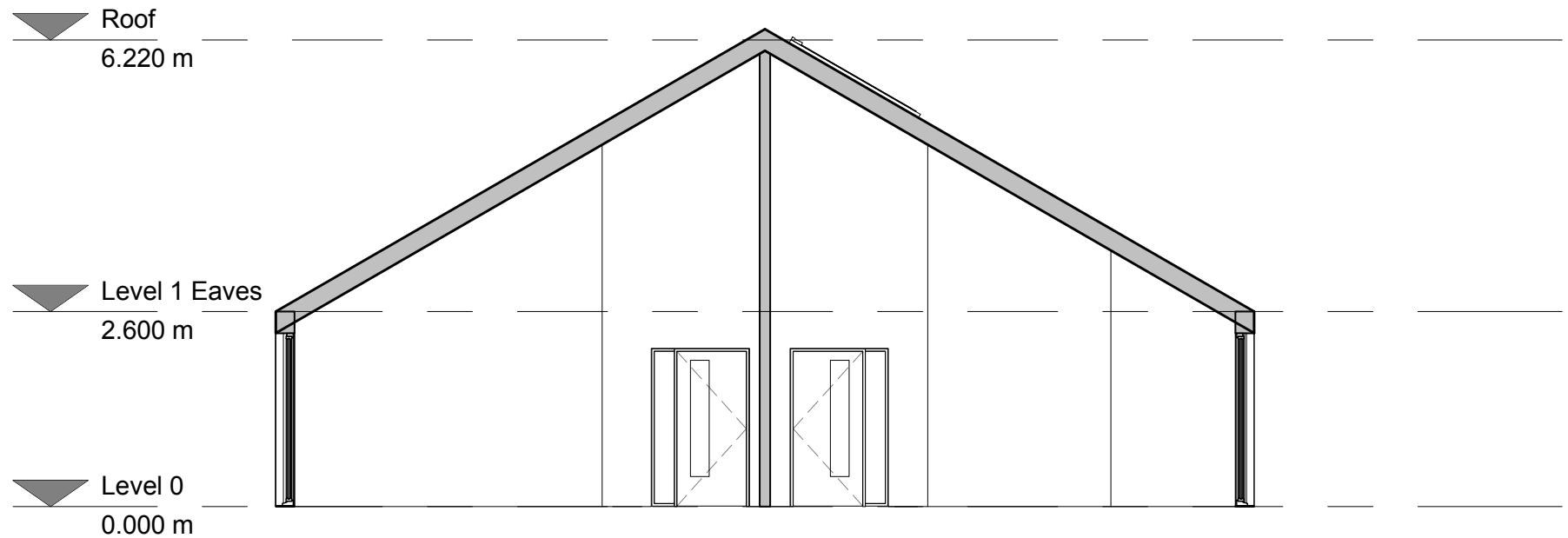


# Evolution – ‘added value’ potential flexibility

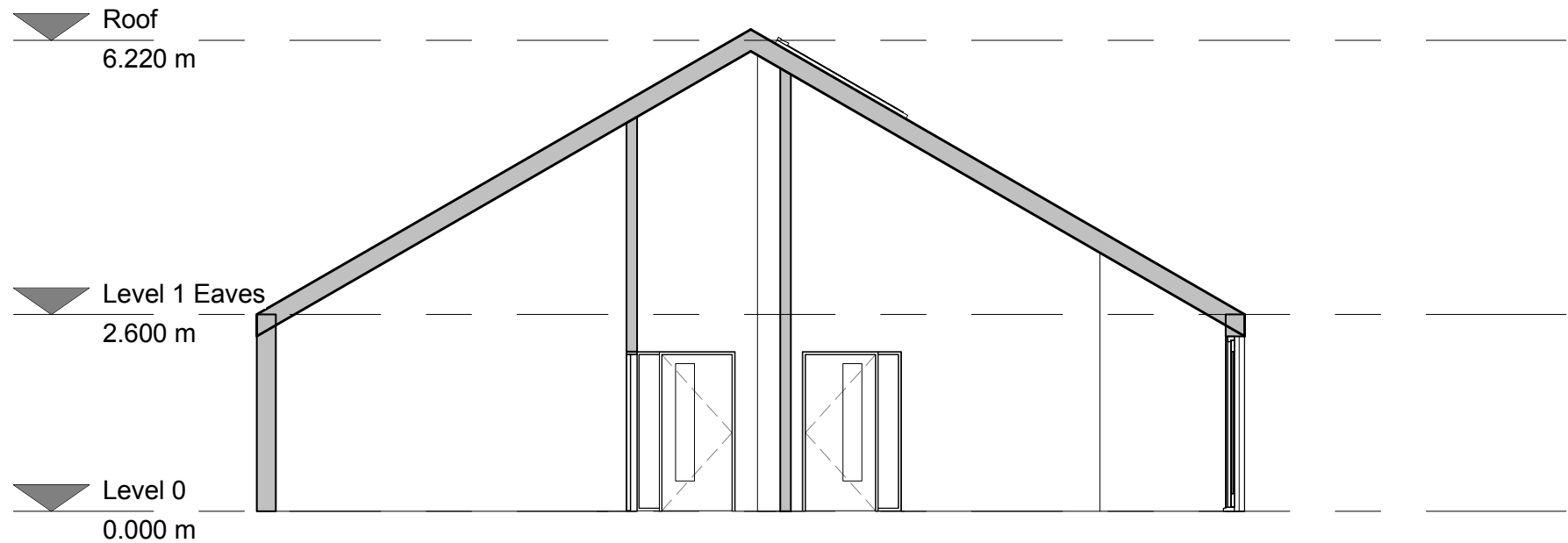
- Shared classroom spaces via opening partitions?
- Open up 5th class space to the playground to create a formal ‘external classroom’



## Evolution - Model/ Facade



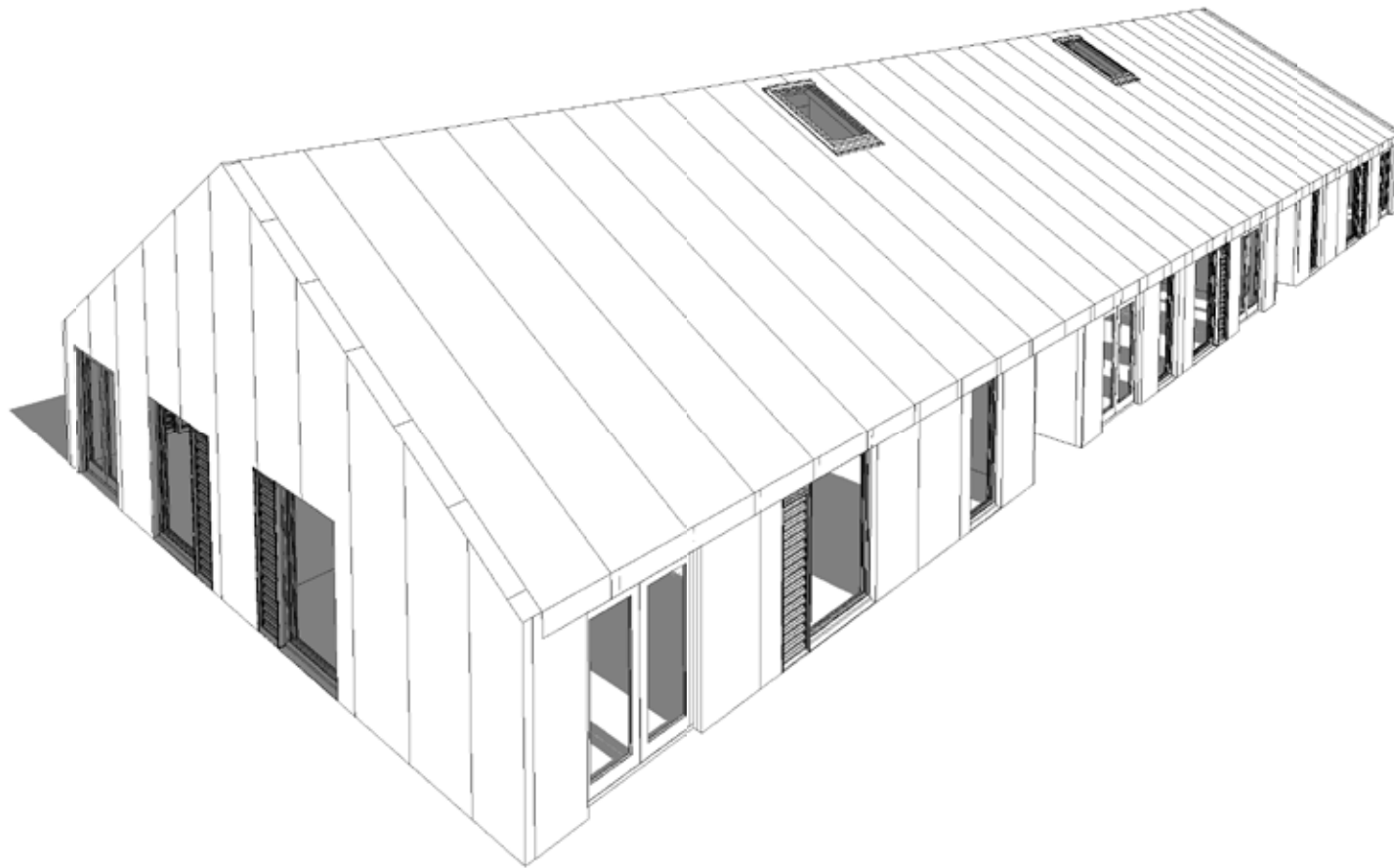
## Evolution - Model/ Facade



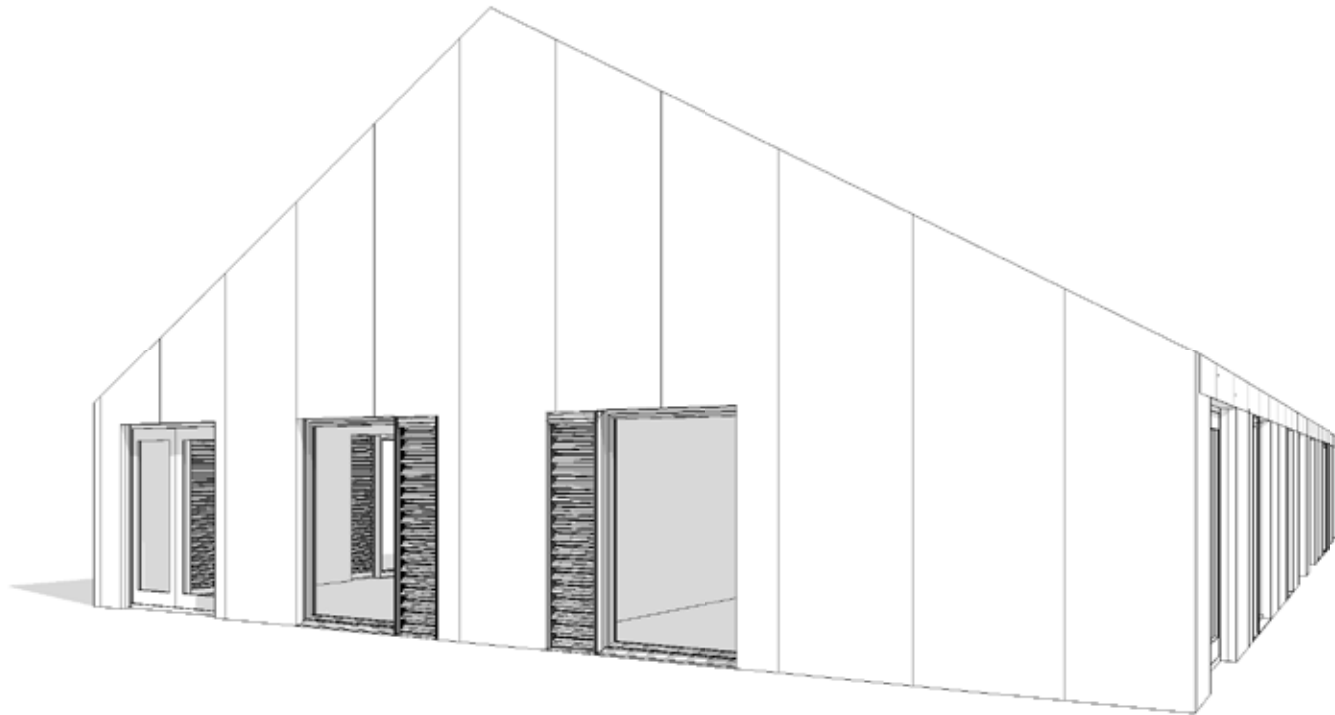
## Evolution - Model/ Facade



## Evolution - Model/ Facade



## Evolution - Model/ Facade







# Programme

